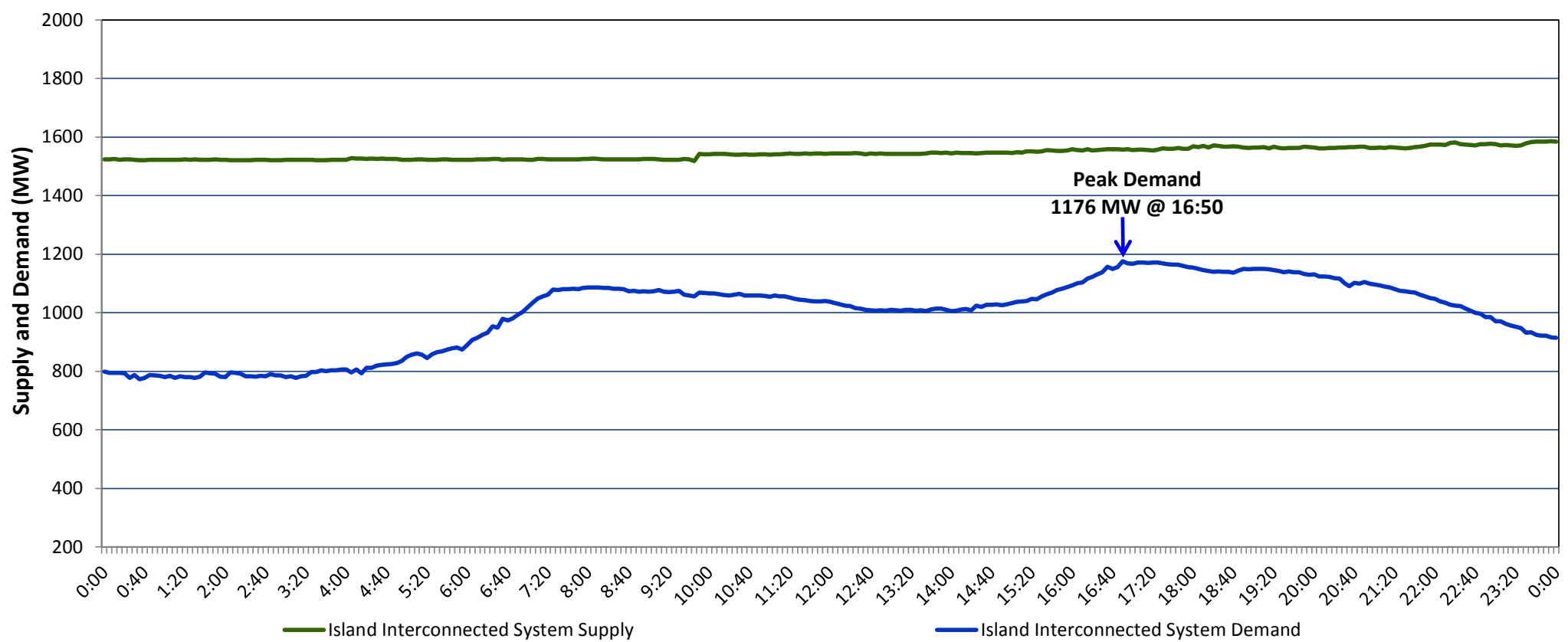


**Newfoundland Labrador Hydro (NLH)
Supply and Demand Status Report Filed Thursday, November 09, 2017**

**Section 1
Island Interconnected System Supply and Demand
Actual 24 Hour System Performance For Wednesday, November 08, 2017**



Supply Notes For November 08, 2017

- 1,2
- A As of 0652 hours, October 30, 2017, Hinds Lake Unit unavailable due to planned outage (75 MW).
 B As of 1510 hours, November 04, 2017, Bay d'Espoir Unit 1 unavailable (76.5 MW).
 C As of 1510 hours, November 04, 2017, Bay d'Espoir Unit 2 unavailable (76.5 MW).
 D As of 1800 hours, November 04, 2017, Holyrood Unit 2 available at 150 MW (170 MW).
 E As of 1848 hours, November 07, 2017, Holyrood Unit 1 unavailable due to planned outage 135 MW (170 MW).
 F At 0939 hours, November 08, 2017, Stephenville Gas Turbine available at 25 MW (50 MW).
 G At 0941 hours, November 08, 2017, Paradise River Unit unavailable due to planned outage (8 MW).

**Section 2
Island Interconnected Supply and Demand**

Thu, Nov 09, 2017	Island System Outlook ³	Seven-Day Forecast	Temperature (°C)		Island System Daily Peak Demand (MW)	
			Morning	Evening	Forecast	Adjusted ⁷
Available Island System Supply: ⁵	1,535 MW	Thursday, November 09, 2017	4	4	1,165	1,071
NLH Generation: ⁴	1,240 MW	Friday, November 10, 2017	5	5	1,160	1,066
NLH Power Purchases: ⁶	110 MW	Saturday, November 11, 2017	5	4	1,220	1,126
Other Island Generation:	185 MW	Sunday, November 12, 2017	3	1	1,210	1,116
Current St. John's Temperature:	3 °C	Monday, November 13, 2017	0	1	1,230	1,136
Current St. John's Windchill:	N/A °C	Tuesday, November 14, 2017	3	1	1,195	1,101
7-Day Island Peak Demand Forecast:	1,295 MW	Wednesday, November 15, 2017	1	1	1,295	1,200

Supply Notes For November 09, 2017

- 3
- Notes:
1. Generation outages for running and corrective maintenance are included. These are not unusual for power system operations. They generally do not impact customer supply. The power system operators schedule outages to system equipment whenever possible to coincide with periods when customer demands are low and sufficient supply reserves are available. However, from time to time equipment outages are necessary and reserves may be impacted.
 2. Due to the Island Interconnected System being isolated from the larger North American grid, when there is a sudden loss of large generating units some customer's load must be interrupted for short periods to bring generation output equal to customer demand. This automatic action of power system protection, referred to as under frequency load shedding, is necessary to ensure the integrity and reliability of system equipment. Under frequency events typically occur 5 to 8 times per year on the Island Interconnected System and the resultant customer load interruptions are generally less than 30 minutes.
 3. As of 0800 Hours.
 4. Gross output including station service at Holyrood (24.5 MW) and improved NLH hydraulic output due to water levels (35 MW).
 5. Gross output from all Island sources (including Note 4).
 6. NLH Power Purchases include: CBPP Co-Gen, Nalcor Exploits, Rattle Brook, Star Lake, Vale capacity assistance (when applicable), and Wind Generation.
 7. Adjusted for CBP&P interruptible load and the impact of voltage reduction, when applicable.

**Section 3
Island Peak Demand Information
Previous Day Actual Peak and Current Day Forecast Peak**

Wed, Nov 08, 2017	Actual Island Peak Demand ⁸	16:50	1,176 MW
Thu, Nov 09, 2017	Forecast Island Peak Demand		1,165 MW

- Notes: 8. Island Demand is supplied by NLH generation and purchases, plus generation owned and operated by Newfoundland Power and Corner Brook Pulp & Paper (Deer Lake Power, DLP).